

DO

Tighten Ball End Set Screw Properly (see right picture)
36 IN.LB.

Clean ALL debris from seat and back (where insert is mounted) when changing inserts

Inspect tooling for damage after any mishap
Call with any tooling maintenance questions

DON'T

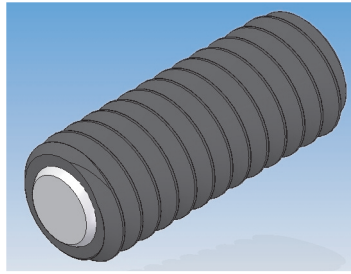
Tighten Ball End Set Screw On Round (see right)

Change inserts without cleaning tool

Run damaged tooling

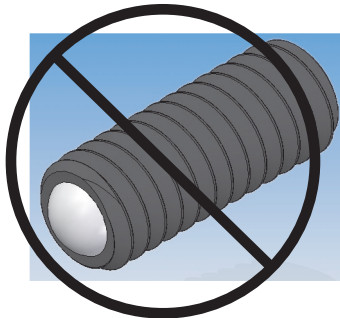
Disregard standard safety precautions

Use Worn Wrenches



Properly Configured Screw

800-430-8498



Improperly Configured Screw With Round End

DO

Tighten Ball End Set Screw Properly (see right picture)
36 IN.LB.

Clean ALL debris from seat and back (where insert is mounted) when changing inserts

Inspect tooling for damage after any mishap
Call with any tooling maintenance questions

DON'T

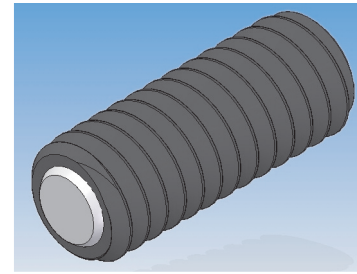
Tighten Ball End Set Screw On Round (see right)

Change inserts without cleaning tool

Run damaged tooling

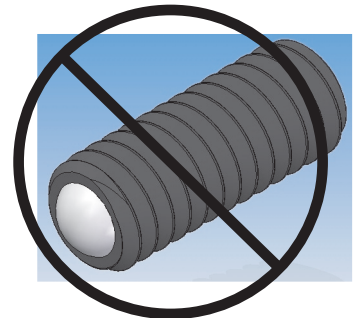
Disregard standard safety precautions

Use Worn Wrenches



Properly Configured Screw

800-430-8498



Improperly Configured Screw With Round End

DO

Tighten Ball End Set Screw Properly (see right picture)
36 IN.LB.

Clean ALL debris from seat and back (where insert is mounted) when changing inserts

Inspect tooling for damage after any mishap
Call with any tooling maintenance questions

DON'T

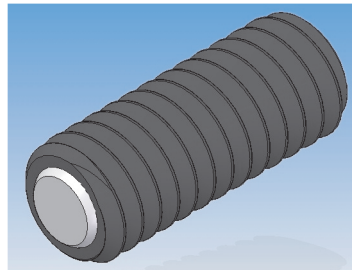
Tighten Ball End Set Screw On Round (see right)

Change inserts without cleaning tool

Run damaged tooling

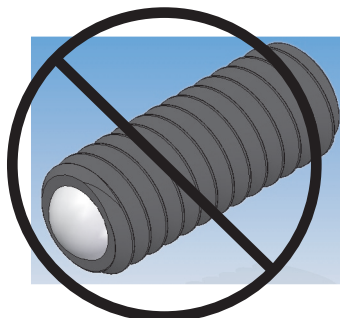
Disregard standard safety precautions

Use Worn Wrenches



Properly Configured Screw

800-430-8498



Improperly Configured Screw With Round End

DO

Tighten Ball End Set Screw Properly (see right picture)
36 IN.LB.

Clean ALL debris from seat and back (where insert is mounted) when changing inserts

Inspect tooling for damage after any mishap
Call with any tooling maintenance questions

DON'T

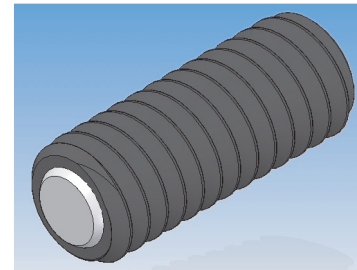
Tighten Ball End Set Screw On Round (see right)

Change inserts without cleaning tool

Run damaged tooling

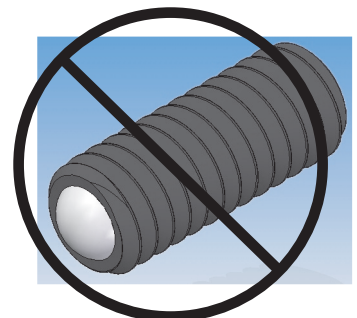
Disregard standard safety precautions

Use Worn Wrenches



Properly Configured Screw

800-430-8498



Improperly Configured Screw With Round End

